

POLLY[®] TOILET ENCLOSURES

THE CORINTHIAN METPAR TYPE: FP-500 Overhead Braced

MATERIALS: Polly[®] SPR – Solid Polymer Resin.

THICKNESS: Doors..... Finished to 1" (25.4mm)
Panels..... Finished to 1" (25.4mm)
Pilasters..... Finished to 1" (25.4mm)

CONSTRUCTION:

Doors:

Finished to 1" (25.4mm) thick, all edges shall have a 0.250" (0.01mm) radius. All corners shall have a ½ (13mm) radius. All doors shall be 55" (1397mm) high and include an aluminum heat sink integrated into the bottom of the door.

Panels:

Finished to 1" (25.4mm) thick, all edges shall have a 0.250" (0.01mm) radius and all corners shall have a ½ (13mm) radius. All panels shall be 55" (1397mm) high and include an aluminum heat sink integrated into the bottom of the panel.

Pilasters:

Finished to 1" (25.4mm) thick and 82" (2083mm) high, all edges shall have a 0.250" (0.01mm) radius. All pilasters 5" (127mm) wide and larger shall be manufactured with integral hinges. Floor mounting shall consist of #304, 14 gauge stainless steel angles affixed to pilaster bottom. #304, 14 gauge stainless steel angle forks are mounted to floor with #12 x 1½ (38mm) stainless screws and plastic anchors. All pilasters shall have a ¼" (6mm) x 3" (76mm) hex head leveling bolt. Pilaster mounting shall be concealed with a 3" (76mm) #304, 20 gauge stainless steel floor shoe. Tops of pilasters shall be braced with bright anodized aluminum anti-grip headrail with an integral curtain track profile.

FITTINGS:

All connections at pilaster-to-wall, pilaster-to-panel and panel-to-wall shall be secured with full height 54" (1372mm) bright anodized aluminum brackets. All screws shall be non-ferrous and tamper-proof with a Torx-Pin head.

HARDWARE:

All doors mounted on 5" (127mm) or wider pilasters shall have integral hinges with nylon cams that can be adjusted from closed to varying open positions. All doors mounted on 4" (100mm) or less width pilasters shall have 54" (1372mm) #304, 16 gauge stainless steel Multi-Cam[®] hinges. The Multi-Cam[®] hinges shall be fastened with tamper-proof Torx-Pin head fasteners at each leaf. The door stop shall consist of a wrap-around strike and keeper. The door lock shall be an aluminum (bright/polished finish) surface slide latch. Door pulls and coat hooks shall be supplied as required.

OPTIONAL FEATURES:

1. Special color match (must meet minimum quantity requirements).
2. Color Connections[™] - Powder coated brackets, Multi-Cam[®] Hinges, shoes and/or headrail.
3. Fire resistant grades.



METPAR CORP

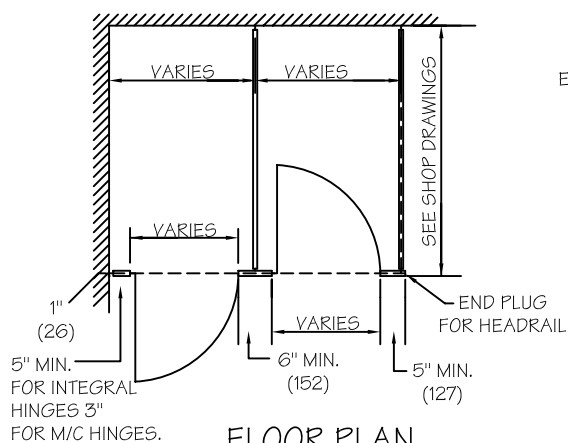
95 State Street, P.O. Box 1873

Westbury, New York, 11590

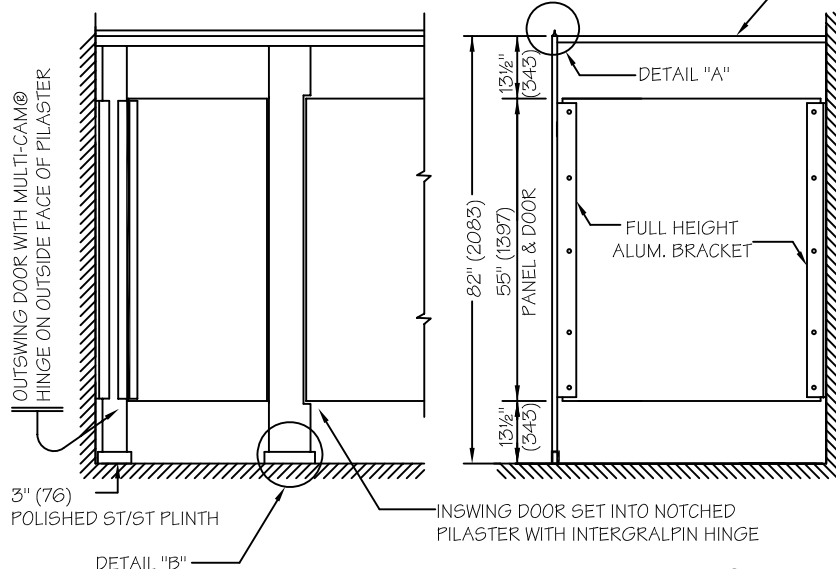
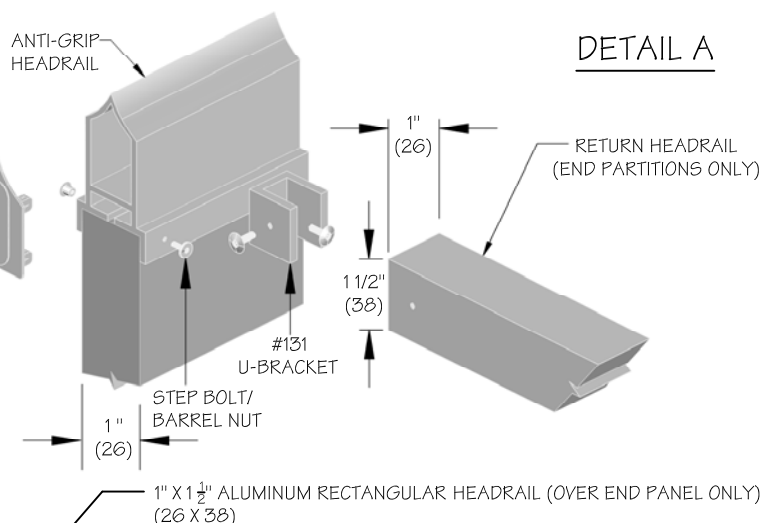
Tel: (516) 333-2600 ~ Fax: (516) 333-2618

Email: Sales@Metpar.com ~ URL: <http://www.Metpar.com>

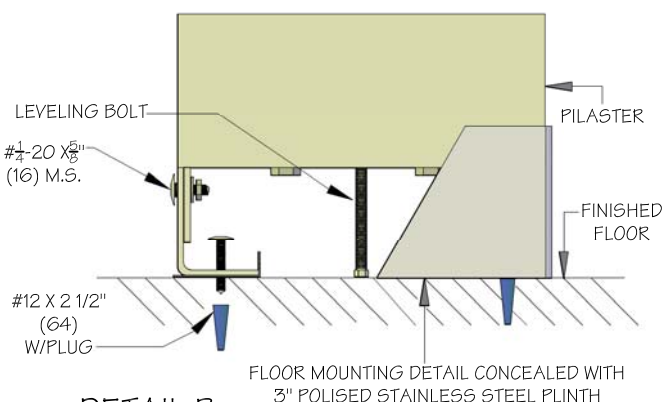
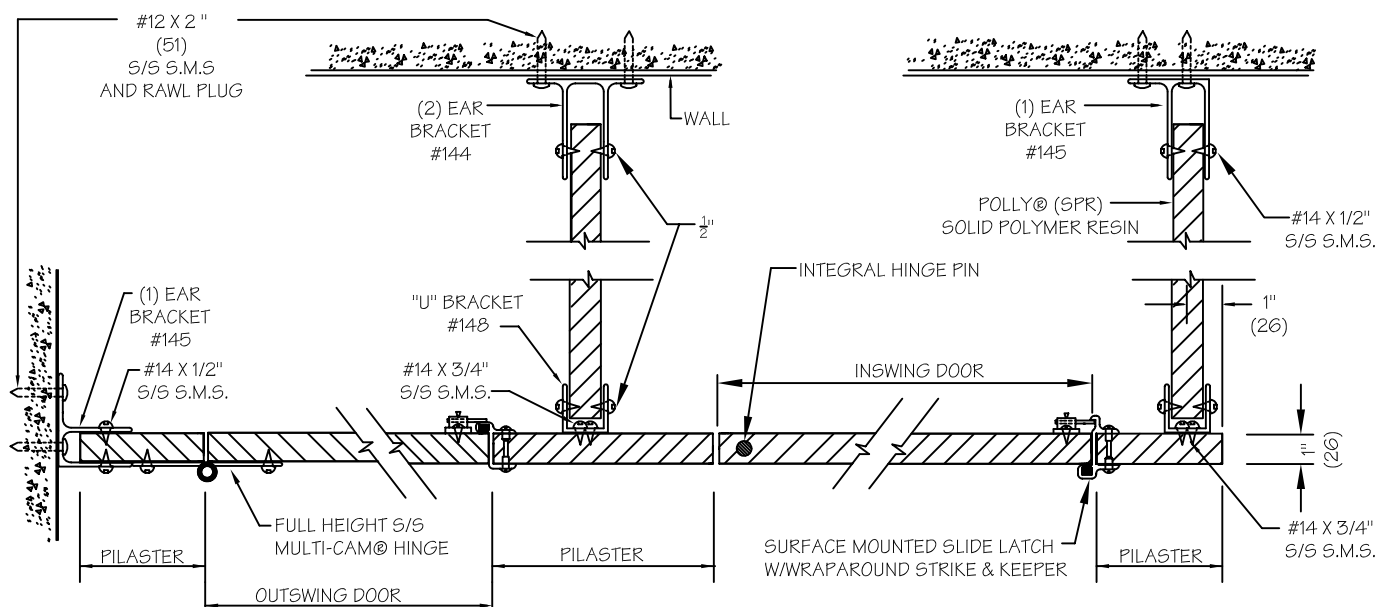
DIMENSIONS IN () = MILLIMETERS

**FLOOR PLAN**

(DOTTED LINES INDICATE HEADRAIL)

**FRONT ELEVATION****SIDE ELEVATION****DETAIL A**

NOTES: This drawing is a standard detail intended to show general information. See shop drawings for actual job layout and specific job conditions that supersede any conflicting information on this sheet.

**DETAIL B****METPAR CORP**

95 State Street, Westbury, NY 11590

Tel: 516-333-2600 Fax: 516-333-2618

Visit us on the web at <http://www.Metpar.com>**POLLY®**STANDARD DETAIL FP500
THE CORINTHIAN

FP500PY.DWG

09-20-10

POLLY[®] TOILET ENCLOSURES

***THE LUXOR* METPAR TYPE: FT-700 Floor Mounted**

MATERIALS: Polly[®] SPR – Solid Polymer Resin.

THICKNESS: Doors..... Finished to 1" (25.4mm)
Panels..... Finished to 1" (25.4mm)
Pilasters..... Finished to 1" (25.4mm)

CONSTRUCTION:

Doors:

Finished to 1" (25.4mm) thick, all edges shall have a 0.250" (0.01mm) radius. All corners shall have a ½ (13mm) radius. All doors shall be 55" (1397mm) high and include an aluminum heat sink integrated into the bottom of the door.

Panels:

Finished to 1" (25.4mm) thick, all edges shall have a 0.250" (0.01mm) radius and all corners shall have a ½ (13mm) radius. All panels shall be 55" (1397mm) high and include an aluminum heat sink integrated into the bottom of the panel.

Pilasters:

Finished to 1" (25.4mm) thick and 70" (1778mm) high, all edges shall have a 0.250" (0.01mm) radius. All pilasters 5" (127mm) wide and larger shall be manufactured with integral hinges. Pilasters are to be secured to the floor by a 3/8" (9.525) steel anchor bar mechanism. Tension nuts are used to apply equal and opposite pressure to all points of mounting system. Zinc plated 3/8" (9.525) diameter studs, lockwashers, nuts and lead expansion shields are provided. Pilaster mounting shall be concealed with a 3" (76mm) #304, 20 gauge stainless steel floor shoe.

FITTINGS:

All connections at pilaster-to-wall, pilaster-to-panel and panel-to-wall shall be secured with full height 54" (1372mm) bright anodized aluminum brackets. All screws shall be non-ferrous with a tamper-proof pin head.

HARDWARE:

All doors mounted on 5" (127mm) or wider pilasters shall have integral hinges with nylon cams that can be adjusted from closed to varying open positions. All doors mounted on 4" (100mm) or less width pilasters shall have 54" (1372mm) #304, 16 gauge stainless steel Multi-Cam[®] hinges. The Multi-Cam[®] hinges shall be fastened with tamper-proof pin head fasteners at each leaf. The door stop shall consist of a wrap-around strike and keeper. The door lock shall be an aluminum (bright/polished finish) surface slide latch. Door pulls and coat hooks shall be supplied as required.

OPTIONAL FEATURES:

1. Special color match (must meet minimum quantity requirements).
2. Color Connections[™] - Powder coated brackets, Multi-Cam[®] Hinges, shoes and/or headrail.
3. Fire resistant grades.



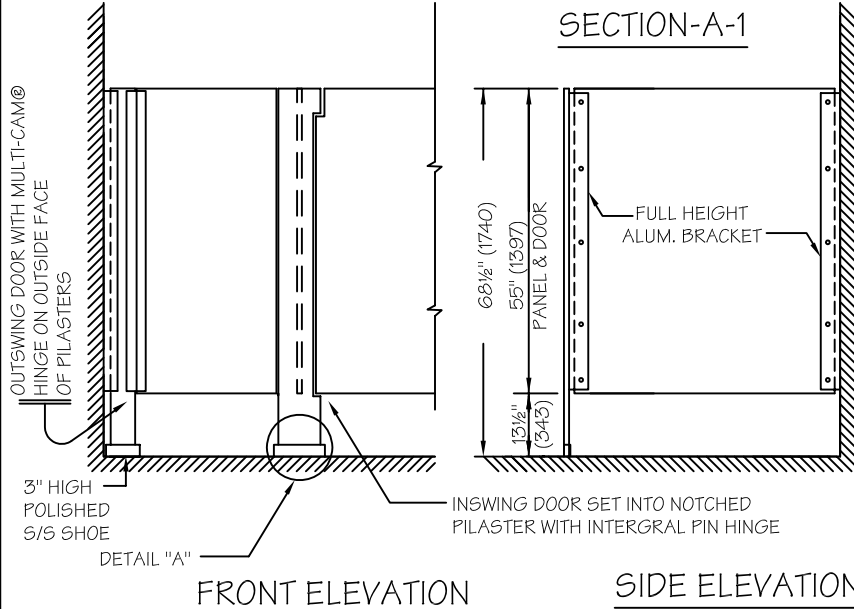
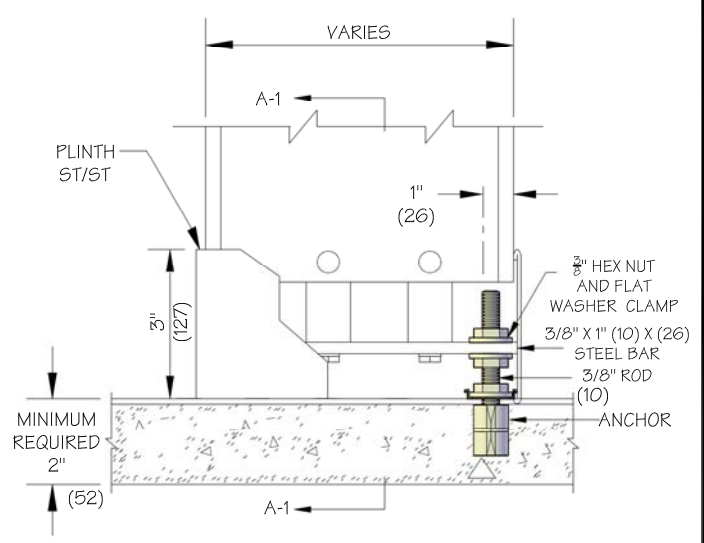
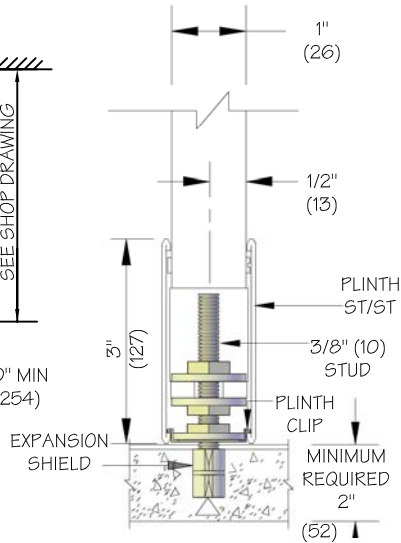
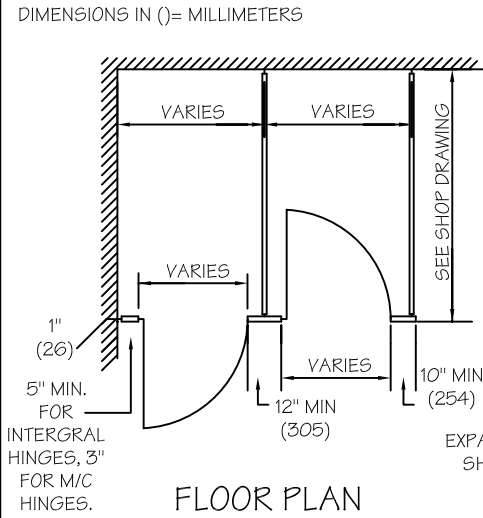
METPAR CORP

95 State Street, P.O. Box 1873
Westbury, New York, 11590

Tel: (516) 333-2600 ~ Fax: (516) 333-2618

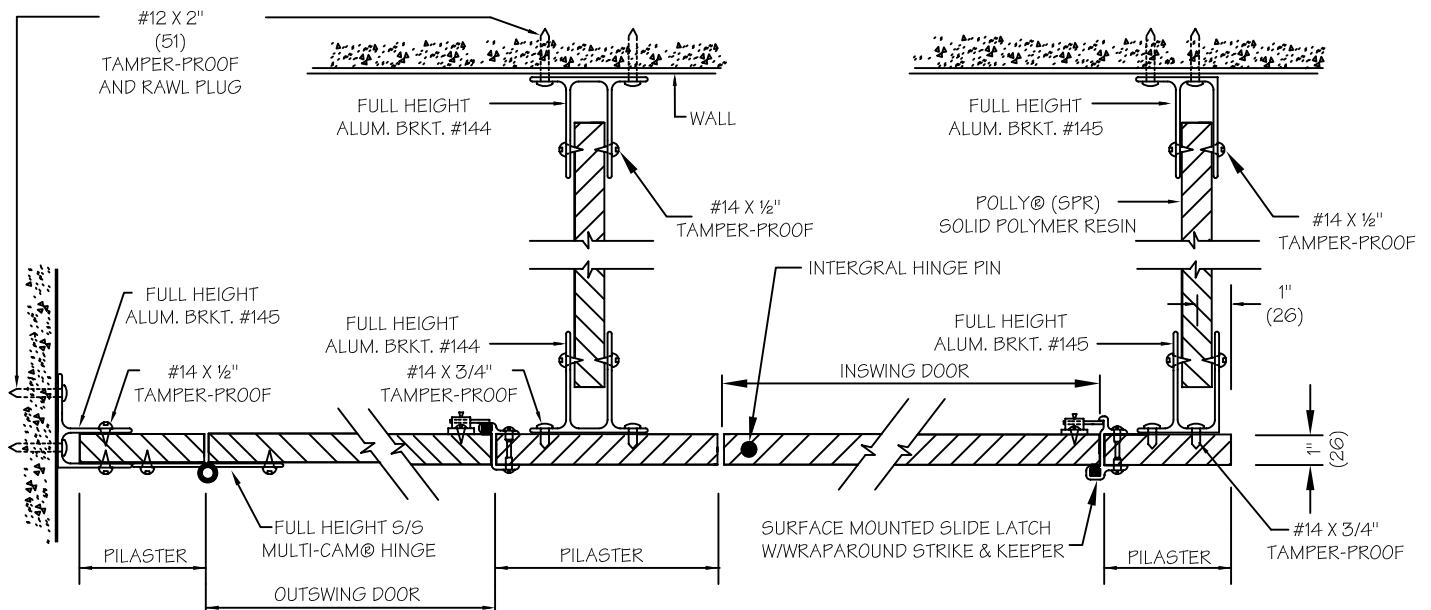
Email: Sales@Metpar.com ~ URL: <http://www.Metpar.com>

DIMENSIONS IN ()= MILLIMETERS



NOTES: This drawing is a standard detail intended to show general construction and specification information. see shop drawings for actual job layout and specific job conditions which supercede any conflicting information on this sheet.

@ DRYWALL USE BLOCKING



METPAR CORP

95 State Street, Westbury, NY 11590

Tel: 516-333-2600 Fax: 516-333-2618

Visit us on the web at <http://www.Metpar.com>

POLLY®

STANDARD DETAIL FT700

THE LUXOR

FT700PY.DWG

09-20-10

POLLY[®] TOILET ENCLOSURES

***THE FORUM* METPAR TYPE: CH-700 Ceiling Hung**

MATERIALS: Polly[®] SPR – Solid Polymer Resin.

THICKNESS: Doors..... Finished to 1" (25.4mm)
Panels..... Finished to 1" (25.4mm)
Pilasters..... Finished to 1" (25.4mm)

CONSTRUCTION:

Doors:

Finished to 1" (25.4mm) thick, all edges shall have a 0.250" (0.01mm) radius. All corners shall have a ½ (13mm) radius. All doors shall be 55" (1397mm) high and include an aluminum heat sink integrated into the bottom of the door.

Panels:

Finished to 1" (25.4mm) thick, all edges shall have a 0.250" (0.01mm) radius and all corners shall have a ½ (13mm) radius. All panels shall be 55" (1397mm) high and include an aluminum heat sink integrated into the bottom of the panel.

Pilasters:

Finished to 1" (25.4mm) thick, all edges shall have a 0.250" (0.01mm) radius. All pilasters 5" (127mm) wide and larger shall be manufactured with integral hinges. Pilasters are to be secured to structural ceiling members (supplied by others) using 3/8" (9.52) steel bolts and pilaster leveling nuts. Lock washers are used with all nuts to prevent loosening by vibration. Tension nuts are used to apply equal and opposite pressure to all points of mounting system. Zinc plated 3/8" (9.52) diameter studs, lockwashers and nuts are provided. Pilasters are to be reinforced for stability with a 1" x 4" (25.4 x 102 mm) Polly Support Rail installed along the length of the stalls fastened behind the pilasters and secured to the end walls. A 70" (1778) full length bracket installed behind each pilaster will extend up to the Support Rail with a Polly Filler Providing additional stability. Bottom of doors are level with bottom of pilasters with no protruding hardware.

FITTINGS:

All connections at pilaster-to-wall and panel-to-wall shall be secured with full height 54" (1372mm) bright anodized aluminum brackets. Panel-to-pilaster connections will use 70" (1778mm) brackets. All screws shall be non-ferrous, with a tamper-proof pin head.

HARDWARE:

All doors mounted on 5" (127mm) or wider pilasters shall have integral hinges with nylon cams that can be adjusted from closed to varying open positions. All doors mounted on 4" (100mm) or less width pilasters shall have 54" (1372mm) #304, 16 gauge stainless steel Multi-Cam[®] hinges. The Multi-Cam[®] hinges shall be fastened with six tamper-proof pin head fasteners at each leaf. The door stop shall consist of a wrap-around strike and keeper, ADA approved and emergency access. The door lock shall be an aluminum (bright/polished finish) surface slide latch. Door pulls and coat hooks shall be supplied as required.

OPTIONAL FEATURES:

1. Special color match (must meet minimum quantity requirements).
2. Color Connections[™] - Powder coated brackets, Multi-Cam[®] Hinges, shoes and/or headrail.
3. Fire resistant grades.



METPAR CORP

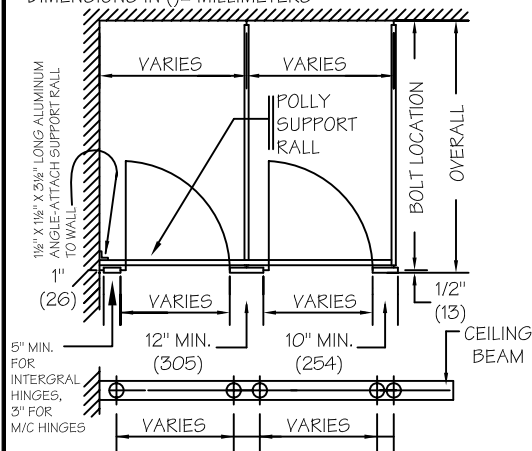
95 State Street, P.O. Box 1873

Westbury, New York, 11590

Tel: (516) 333-2600 ~ Fax: (516) 333-2618

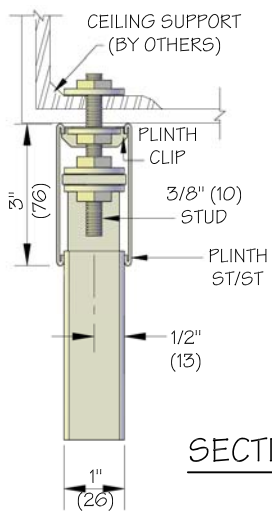
Email: Sales@Metpar.com ~ URL: <http://www.Metpar.com>

DIMENSIONS IN ()= MILLIMETERS

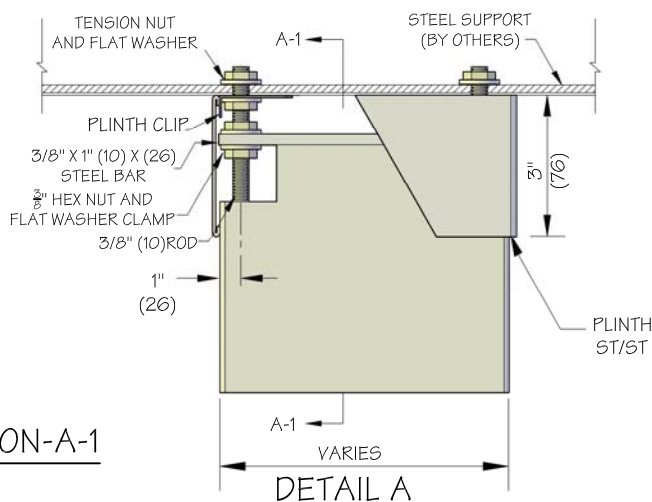


FLOOR PLAN

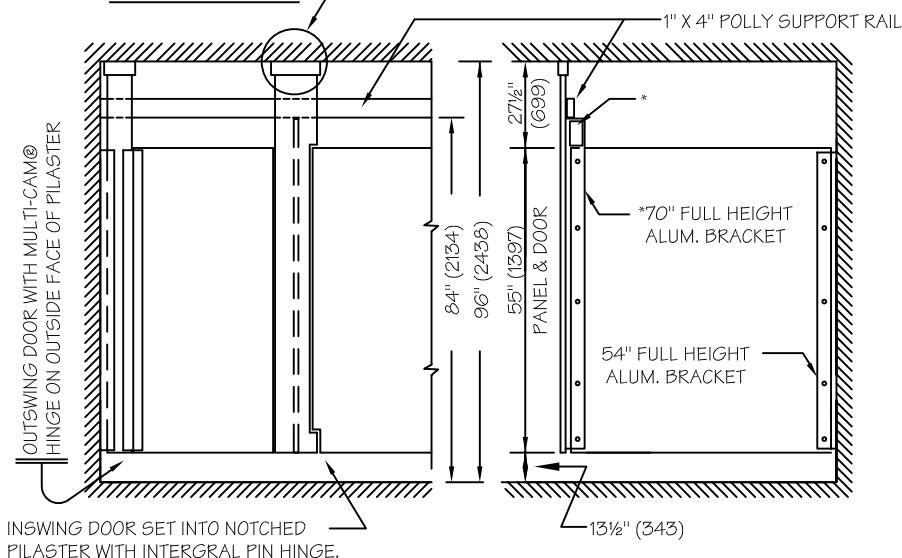
DETAIL "A"



SECTION-A-1



DETAIL A



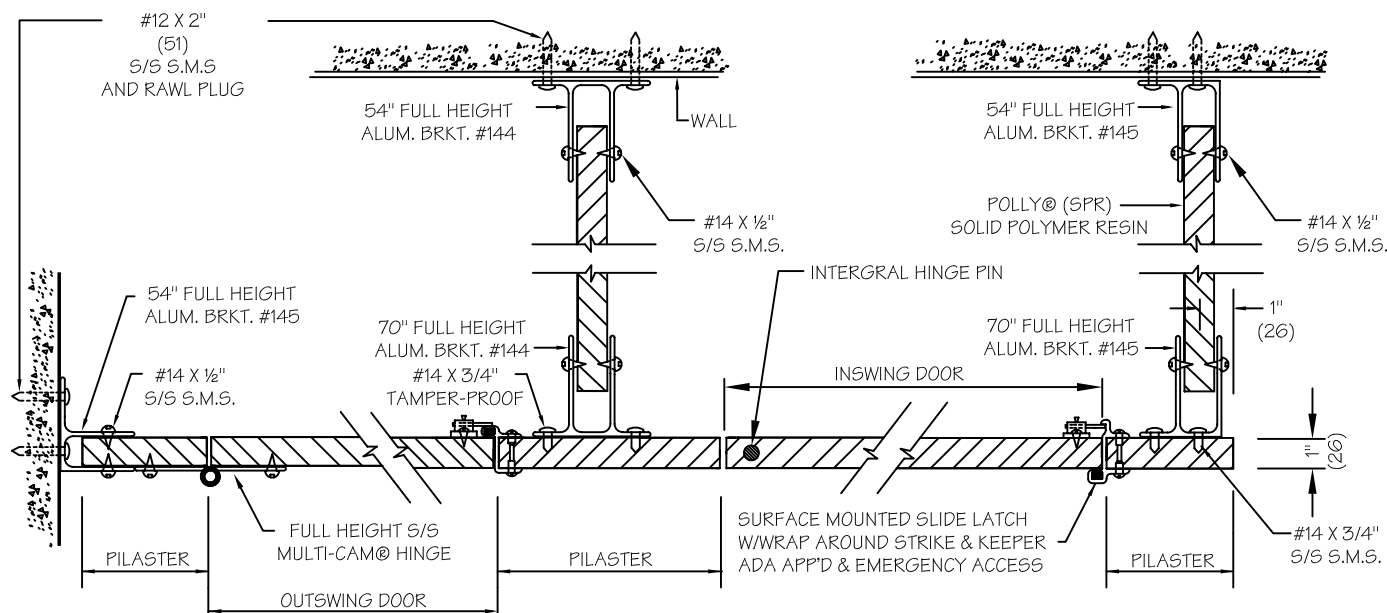
FRONT ELEVATION

SIDE ELEVATION

NOTES: This drawing is a standard detail intended to show general construction and specification information. see shop drawings for actual job layout and specific job conditions which supercede any conflicting information on this sheet.

*BRACKET BEHIND PILASTER WILL BE 70" LONG WITH A 2 1/2" X 16" POLLY FILLER ABOVE PANEL.

@ DRYWALL USE BLOCKING



METPAR CORP

95 State Street, Westbury, NY 11590

Tel: 516-333-2600 Fax: 516-333-2618

Visit us on the web at <http://www.Metpar.com>

POLLY®

STANDARD DETAIL CH700
THE FORUM

CH700PY.DWG

09-20-10