

# PHENOLIC AND POLYLIFE® LOCKERS



**COLUMBIA**  
**LOCKERS®**  
A Division of **PSiSC®**



A Division of **PSiSC®**  
**LOCKERS®**  
**COLUMBIA**

Introducing COLUMBIA LOCKERS® from “The World’s Most Durable Toilet Partition” company. COLUMBIA LOCKERS® builds quality lockers using durable COLUMBIA ANTIMICROBIAL POLYLIFE®, COLUMBIA PHENOLIC® and COLUMBIA TERRA CORE® materials constructed with our patent pending COLUMBIA UNI-BOX® design. The results are quality lockers built for high use in high humidity areas that look great even after years of use.

COLUMBIA LOCKERS® are driving industry innovation with: 100% Recyclable HDPE Material at standard pricing, Antimicrobial protection to kill MRSA and Staph on contact, Frameless Locker Doors for increased access and ventilation, and Mortise & Tenon joints for durability.

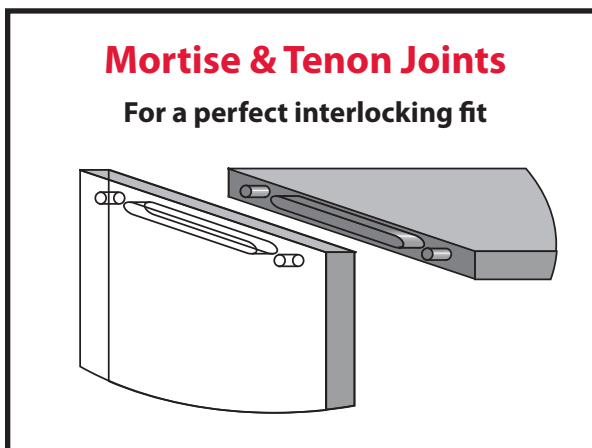


## COLUMBIA LOCKER INNOVATIONS

- Antimicrobial COLUMBIA POLYLIFE® Lockers
- 100% Recyclable HDPE Material
- Patent-Pending COLUMBIA UNI-BOX® design w/ Mortise & Tenon Joints
- Frameless Door design increases access and ventilation
- Class A Fire Rated Options



**PSiSC**<sup>®</sup> is committed to "Promoting A Greener Environment" and actively seeks out opportunities to safeguard and ensure the sustainability of our natural resources. As a member of the U.S. Green Building Council, we constantly strive to introduce products and processes that contribute to LEED<sup>®</sup> credits. We have developed programs to ensure compliance with all applicable environmental laws and regulations. **PSiSC**<sup>®</sup> employees are trained to ensure that all facility activities and operations are conducted in an environmentally safe manner. We are committed to continually improving our environmental performance.



The patent-pending, COLUMBIA UNI-BOX<sup>®</sup> design leads the industry in functionality, durability and modularity. Our Mortise & Tenon joints ensure a perfect interlocking fit that does not deteriorate. Our Frameless Locker Doors increase useable locker space while our perimeter ventilation increases airflow and removes the need for unsightly door vents. The combination of Mortise & Tenon joints and Stainless Steel fasteners provides modularity so owners can mix and match configurations to meet design and space needs. Our modular design allows your locker to be reconfigured as your needs change.

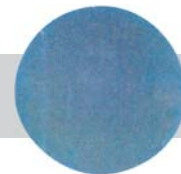
## COLUMBIA ANTIMICROBIAL POLYLIFE® LOCKERS

With the onslaught of MRSA, Staph and other infections, facility managers are eager for permanent solutions to kill germs on contact. COLUMBIA ANTIMICROBIAL POLYLIFE® Lockers with COLUMBIA GUARD® is one of these solutions.

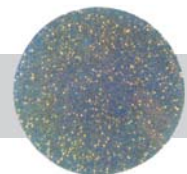
COLUMBIA ANTIMICROBIAL POLYLIFE® Lockers are made from rugged, 100% post consumer recycled High Density Polyethylene (HDPE) with COLUMBIA GUARD® protection. COLUMBIA GUARD® is a non-migratory antimicrobial agent that is manufactured into the panels so it will not dissipate or scratch off, providing permanent protection against MRSA, Staph and E. Coli. The JIS Z 2801 test (Test for Antimicrobial Activity and Efficacy) certified COLUMBIA ANTIMICROBIAL POLYLIFE® LOCKERS with a >4.0 efficacy rating and a 99.99% kill effectiveness against E.Coli, MRSA and Staph.

For durability, the patent-pending COLUMBIA UNI-BOX® design combines mortise and tenon joints, Stainless Steel fasteners, COLUMBIA UNI-HINGES®, a multipoint latching system and Frameless Doors. COLUMBIA LOCKERS® multipoint latching system meets ADA requirements, enables end users to close the doors without lifting the handle, and improves security by locking the door to the side panel. COLUMBIA POLYLIFE® Lockers are built with 3/8" solid HDPE backs, tops, bottoms, shelves and sides with 1/2" doors and injection molded antimicrobial handles.

COLUMBIA ANTIMICROBIAL POLYLIFE® Lockers are available with optional Class B Fire Ratings, matching benches, sloped tops, finished tops, decorative end panels, filler panels, base plates and choice of locking mechanisms. All COLUMBIA LOCKERS® come with a 20 year warranty.



With  
COLUMBIA GUARD®



Without  
COLUMBIA GUARD®

## COLUMBIA POLYLIFE LOCKERS®

COLUMBIA POLYLIFE® Lockers come with all the benefits, choices and styles of ANTIMICROBIAL POLYLIFE® Lockers, without antimicrobial protection. COLUMBIA POLYLIFE® Lockers are made with 100% Post Consumer Recycled HDPE and come with injection molded antimicrobial handles for no extra cost.



### COLUMBIA POLYLIFE® LOCKER INNOVATIONS

- COLUMBIA GUARD® permanent Antimicrobial Protection
- 100% Recyclable HDPE Material
- Patent-Pending COLUMBIA UNI-BOX® design with Mortise & Tenon Joints
- Frameless Door design increases access and ventilation
- Push to close Columbia Multipoint Latch



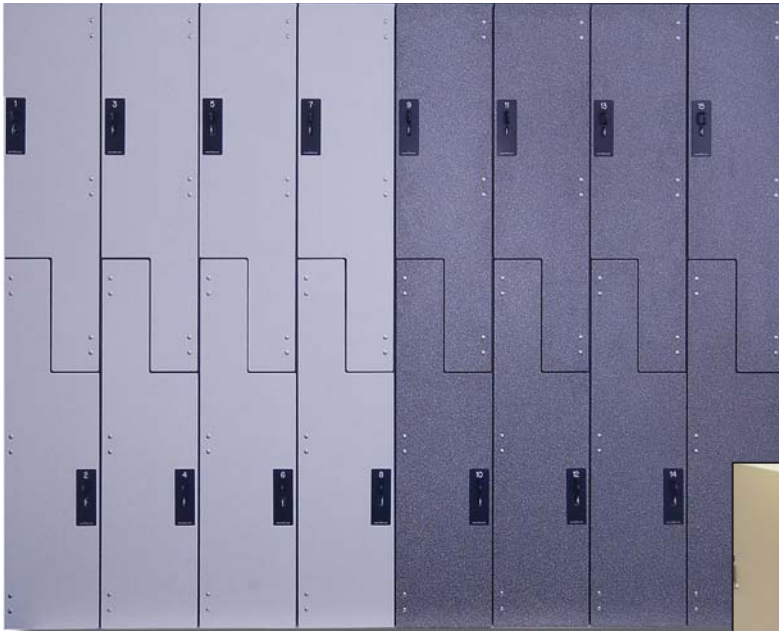
**Columbia Multipoint Latching System**



# COLUMBIA PHENOLIC® LOCKERS

COLUMBIA PHENOLIC® and COLUMBIA TERRA CORE® Lockers are the most durable lockers on the market today. Solid Phenolic's unique non-porous surface eliminates the ability for bacteria, molds and mildew to grow, making it perfect for wet areas. COLUMBIA PHENOLIC® is GREENGUARD® certified, water proof, graffiti and scratch resistant. COLUMBIA PHENOLIC® is available in many colors and patterns making it simple to design custom locker rooms.

COLUMBIA PHENOLIC® Lockers are built using the patent-pending COLUMBIA UNI-BOX® design with mortise and tenon joints, Stainless Steel fasteners, frameless doors, durable hinges and multiple locking options. COLUMBIA PHENOLIC® Lockers are constructed with 3/8" thick tops, bottoms and shelves, 5/16" thick sides and backs, and 1/2" thick doors. COLUMBIA PHENOLIC® Lockers are available with your choice of the Columbia UNI-HINGE®, the Columbia Offset hinge or the Columbia Concealed Hinge.



# COLUMBIA TERRA CORE® LOCKERS

COLUMBIA TERRA CORE® Lockers are a special category of Solid Phenolic and comes with all the benefits of COLUMBIA PHENOLIC® Lockers. COLUMBIA TERRA CORE® is distinguished from standard Phenolic by its color matched edges. COLUMBIA TERRA CORE® is GREENGUARD® Certified and comes in 6 earth tone colors.



## COLUMBIA PHENOLIC® LOCKER INNOVATIONS

- Patent-Pending COLUMBIA UNI-BOX® design with Mortise & Tenon Joints
- Frameless Door design increases access and ventilation
- Class A Fire Rating Option
- GREENGUARD® Certified



DISTINCTIVE PHENOLIC BLACK EDGE



COLOR MATCHED EDGE

COLUMBIA PHENOLIC® and COLUMBIA TERRA CORE® Lockers are available with matching benches, sloped tops, finished tops, decorative end panels, base plates and choice of locking mechanisms. All COLUMBIA LOCKERS® come with a 20 year warranty and are optionally available with a Class A Fire rating.

## POCKET LOCKERS™

- Phenolic
- Durable
- Water Resistance
- Vandal Resistance
- Easy to Clean
- 1-6 Tier Lockers
- Z-Lockers
- Police Lockers



- Twin Hinge for Lasting Durability
- Large Selection of Locks Available
- Wide Color Selections Available
- Custom Design
- Fireman Lockers
- School Lockers
- Gym Lockers

## COLUMBIA LOCKER® BENCHES

COLUMBIA LOCKERS® are available with matching benches made from 1" thick COLUMBIA POLYLIFE®, 3/4" thick COLUMBIA PHENOLIC® or 3/4" thick COLUMBIA TERRA CORE®.



Black Powder Coated Aluminum Wall Bracket. 1/8" thick Powder coated Aluminum Plate wall brackets .



Black Powder Coated Steel Pedestal: 11 Gauge Steel center post with 8" diameter heli-arch welded flanges.



Stainless Steel Pedestal: 11 Gauge, satin finished, Type 304 Stainless Steel with 8" diameter flanges.



Black Powder Coated Aluminum Pedestal: Powder Coated, 2" square aluminum tubing with 6" square plates.



# COLUMBIA LOCKER® CONFIGURATIONS

COLUMBIA LOCKERS® offer users hundreds of Locker configurations to choose from. Select your width, depth, height and number of openings. With Columbia Uni-Box® construction, your lockers are modular, enabling you to mix and match configurations and widths to create a custom locker room.



1 - 6 & Z Tier	
Width	9" 12" 15" 18"
Depth	12" 15" 18"
Height	36" 48" 60" 72"

- Z-tier not available in 9" wide
- Not all door options are available in 36" and 48" heights



Two Person	
Width	15" 18"
Depth	12" 15" 18"
Height	60" 72"



Stadium	
Width	18" 24" 30"
Depth	18" 24" 30"
Height	60" 72"



Cubbie	
Width	9" 12" 15" 18"
Depth	12" 15" 18"
Height	36" 48" 60" 72"
Opening	1 to 6



Executive	
Width	18" 24"
Depth	18" 21" 24"
Height	72"

OPTIONS
SLOPED TOPS
FINISHED TOPS
END PANELS
CORNER PANELS
ADJUSTABLE BASE
KICK PLATES

# COLUMBIA LOCKER® HARDWARE



COLUMBIA Concealed Hinge: 14 Gauge Type 304 Stainless Steel with a Satin finish, allows the door to open 90°.



COLUMBIA Offset Hinge: 14 Gauge Type 304 Stainless Steel with a Black Powder Coated finish, allow the door to open 180°.



COLUMBIA UNI-HINGE®: Continuous extruded 6063-T5 Aluminum with 3/16" Type 304 Stainless Steel Pivot Pin and powder coating finish.



COLUMBIA Coat Hooks: Satin Finished, 11 Gauge Type 304 Stainless Steel Coat Hooks with smooth, polished edges.



COLUMBIA POLYLIFE® Handle: Injection molded HDPE with an Antimicrobial efficacy rating of 4.0 or greater requiring less than 5 lbs. of lifting force.



COLUMBIA PHENOLIC® Lock Hasp: 11 Gauge Type 304 Stainless Steel with a Satin Finish and smooth edges.



Digilock®: Keyless locker with four digit user selected code.



SAFE-O-PIN®: Keyless locker with a four to ten digit user or facility selected code.



SAFE-O-MAT®: Coin Collect, Coin Return and card locking system.



Zephyr Lock®: Electronic RFID Lock with Keypad.



Kenstan Key Locks®: Keyed individually, keyed alike or keyed in groups. With master key.



Master Lock®: Built-In Combination Lock with five different pre-programmed three digit combinations.

## COLUMBIA PHENOLIC® Stock Colors (Other Colors Available)



949  
White



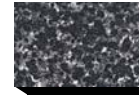
7022  
Natural Canvas



7244  
Sun Wash



692  
Folkstone Celesta



689  
Stellar



966  
Burgundy



3687  
Autumn Indian Slate



7014  
Colorado Slate



7018  
Navy Grafix



9251  
Black Maisie

## COLUMBIA TERRACORE® Colors



TC-600  
Sand



TC-300  
Moss



TC-100  
Clay



TC-400  
Mud

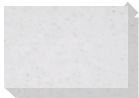


TC-500  
Rock



TC-200  
Dirt

## COLUMBIA POLYLIFE® & Antimicrobial POLYLIFE® Colors



PL-140  
Grey Speckle



PL-130  
Slate Speckle



PL-220  
Taupe



PL-320  
Forest



PL-300  
Deep Blue



PL-120  
Sand Speckle



PL-340  
Slate



PL-330  
Sandstone



PL-210  
Garnet



PL-290  
Midnight



Columbia Lockers® is proud to deliver Antimicrobial Lockers, manufactured with Columbia Guard®, a permanent antimicrobial agent that is compounded into the HDPE material during manufacturing. This agent kills bacteria immediately upon contact and has an efficacy rating of 4.0 or greater when tested in accordance with the JIS Z 2801 Quantitative Test.



# COLUMBIA LOCKERS®

A Division of PSiSC®

For more information please visit us at  
[www.COLUMBIALOCKERS.com](http://www.COLUMBIALOCKERS.com)

## OTHER FINE PRODUCTS PROVIDED BY PSiSC®

### COLUMBIA PARTITIONS®

A Division of PSiSC®



### COLUMBIA ACCESSORIES®

A Division of PSiSC®



Partition Systems **Incorporated** of South Carolina®  
(Office) 866.337.7286 (Fax) 888.212.0306 or 803.461.0869  
PO Box 181 / Columbia, SC / 29202

COLUMBIA LOCKERS®, COLUMBIA PHENOLIC®, COLUMBIA POLYLIFE®, COLUMBIA TERRACORE®, COLUMBIA PARTITIONS®, COLUMBIA ACCESSORIES®, COLUMBIA UNI-BOX® AND COLUMBIA UNI-HINGE® and features are subject to one or more patent applications and these marks are trademarks of PSiSC®.